

Bredel 280

Bredel

Hose Pumps

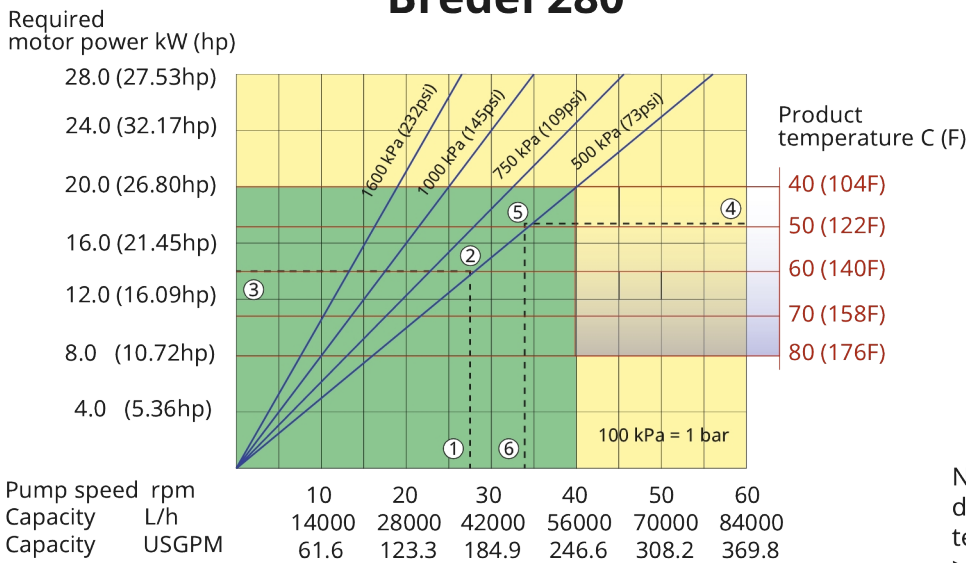
Bredel hose pumps (65-2100)

Features and benefits

- Dry running and self-priming
- No seals, ball-checks, diaphragms, glands, immersed rotors, stators or pistons to leak, clog, corrode or replace
- Handles abrasive slurries, corrosive acids, gaseous liquids
- No slippage, allowing true positive displacement for accurate, repeatable metering
- No ancillary equipment, check valves, sealing water flush systems or run-dry protection required
- Fully reversible to blow out suction and drain lines safely

Bredel 280 performance

Bredel 280



Note: The area of continuous operation diminishes with increased product temperatures. For product temperatures >40C, the area of continuous operation reduces to the corresponding red temperature line.

1. Flow required indicates pump speed
2. Calculated discharge pressure
3. Net motor power required
4. Product temperature
5. Calculated discharge pressure
6. Maximum recommended pump speed

- Continuous duty
- Intermittent duty

* Maximum 3 hours operation followed by minimum 1 hour stop

Technical specifications

	Bredel 280
Max. flow rate continuous	56160 L/h (14818 USGPH)
Max. flow rate intermittent	84240 L/h (22227 USGPH)
Volume per revolution	23.4 L (6.18 USG)
Max. continuous operating speed	40 rpm
Max. intermittent operating speed	60 rpm
Max. operating pressure	16 bar (232 psi)
Max. inlet pressure	1.5 bar abs (23 psi abs)
Operating temperature	-20 °C to 45 °C (-4 °F to 113 °F)
Fluid temperature	-20 °C to 80 °C (-4 °F to 176 °F)
Min. starting torque	3400 N m (30092 in.lbs)
Weight	4295 kg (9469 lbs)
Hose lubricant required	80 L (21.13 USG)
Port configurations	Down, Left, Right, Up
Compatible hose materials	CSM, EPDM, F-NBR, NBR, NBR for food, NR-Metering, NR-Transfer
Flange assembly type	ANSI, DIN, JIS

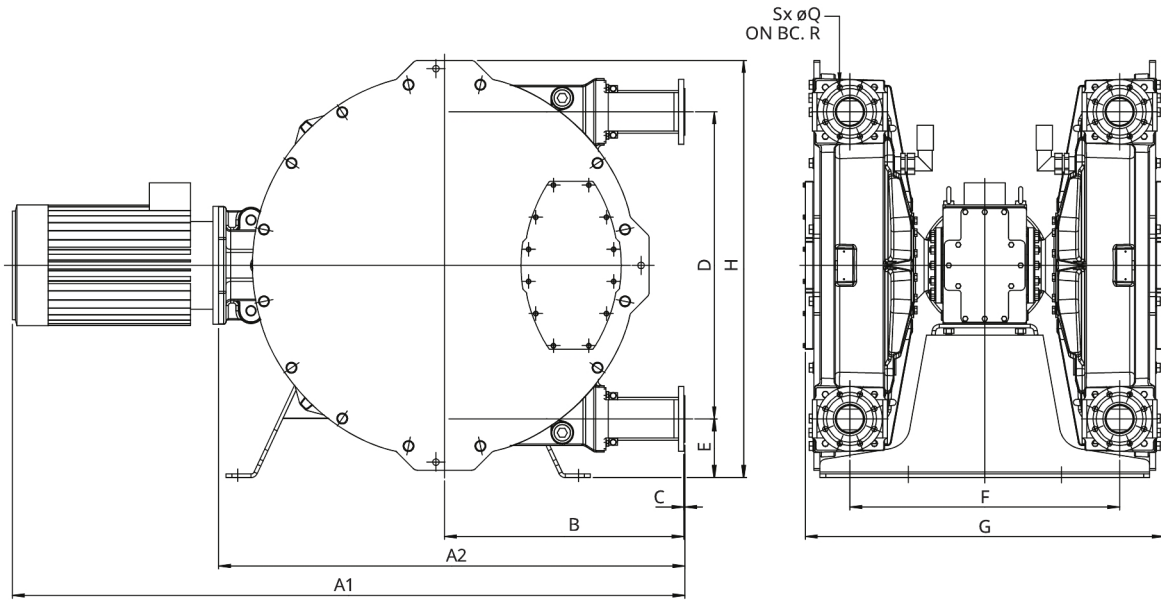
Please consult your Bredel representative for lower or higher temperature operation.

Allowable ambient temperature is based on pump capabilities and may be further limited by gearbox ambient capabilities.

Materials of construction

	Bredel 280
Hose material	CSM, EPDM, F-NBR, NBR, NBR for food, NR-Metering, NR-Transfer
Housing	Cast iron, ISO12944 category C4M
Rotor assembly	Cast iron, ISO12944 category C4M
Cover assembly	Cast iron, ISO12944 category C4M
Brackets and fasteners	Galvanised steel, Stainless steel 316
Support frame	Galvanised steel, Stainless steel 316
Hose clamps	Galvanised steel, Stainless steel 316
Seals	Neoprene, Nitrile

Bredel 280 dimensions



Type	A1	A2	B	C	D	E	F	G	H	ØQ	R	S
Bredel 280 (mm)	*	1404	700	4	876	182	800	1047	1218	18	160	8
Bredel 280 (inches)	*	55.3	27.6	0.16	34.5	7.2	31.5	41.2	48	0.71	6.3	0.31

Disclaimer: The information contained in this document is believed to be correct at the time of publication, but Watson-Marlow Bredel BV accepts no liability for any error it contains, and reserves the right to alter specifications without prior notice. All mentioned values in this document are values under controlled circumstances at our test bed. Actual flow rates achieved may vary because of changes in temperature, viscosity, inlet and discharge pressures and/or system configuration. APEX, DuCoNite, Bioprene and Bredel are registered trademarks.



wmfts.com/global
10 April 2026